

What you can do with your **GERMAN MAJOR**



German Major Skills



Written & Spoken Communication

You learn to read, listen to, and comprehend German and express thoughts and ideas in German through written and oral communication.



Critical Reading & Analytical Thinking

You analyze texts and media, identify and apply patterns in language use, assess evidence, and recognize the possible implications of texts and media for various contexts, perspectives, and issues.



Cultural Competence

You develop awareness of and sensitivity to practices, products, and perspectives and diverse cultural, historical, social, and political contexts of other cultures along with your own.



Teamwork

You build and maintain collaborative relationships to work effectively toward common goals, while appreciating diverse viewpoints and shared responsibilities.



Creative Thinking

You learn to generate original ideas, experiment and take risks, solve problems, and use a wide variety of media to communicate.



Professionalism & Work Ethic

You apply principles of ethical and professional conduct, demonstrate personal accountability and effective work habits, understand the impact of non-verbal communication, and act responsibly with the interests of the larger community in mind.

Supplement Your Skills With



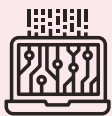
Career & Self Development



Experience Fostering Professional Equity & Inclusion



Study or Internships Abroad



Data Analysis & Interpretation



Internships & Part-Time Work

Chart Your Path Forward

Activate Your Handshake Account

for connections to jobs, internships, employer & alumni networking.

Explore Career Communities

to discover a wide variety of fields where you can turn your major into success.

Get Career & Internship Advising

from SuccessWorks to make a plan, whether you're a first-year student or about to graduate.

Get Started: successworks.wisc.edu

Put your German major to **WORK**

Common Alumni Job Titles

1. Account Executive/Manager
2. Administrative Assistant
3. Advisor
4. Analytics Consultant/Associate
5. Business Development Director/Manager
6. Business Owner
7. Consultant
8. Editor
9. Engineer
10. Executive Director
11. Partner
12. Professor
13. Project Manager
14. Branch Manager
15. Speech Language Pathologist
16. Teacher



Common Employers of Alumni

- Accenture
- Amazon Web Services (AWS)
- Arconic
- Aurora Healthcare
- Baird
- Ballotpedia
- Banner Bank
- Berkshire Hathaway
- CDW
- Children's Wisconsin
- Epic
- Falk Legal Group
- Gallagher
- Madison Metropolitan School District
- Mercer
- State of Wisconsin
- Target
- University of Minnesota
- University of Wisconsin-Madison
- Walmart

Recent Grads' Career Plans

- 62%** Employment
- 33%** Continuing Education or Grad School
- 3%** Volunteer/Service Program
- 1%** Military
- 1%** Other

Industries of Employment

1. Education
2. Information Technology
3. Healthcare
4. Finance
5. Government
6. Legal
7. Manufacturing
8. Retail
9. Hospitality
10. Non-profit

Where Alumni Live & Work

- 35%** Wisconsin
- 1%** Minnesota
- 9%** Illinois
- 7%** California
- 4%** New York
- 34%** Other



"As a German major, I gained a vital understanding of the value of diverse perspectives. This expanded worldview, plus critical reading and writing skills, are key aspects of my legal career today."

Molly Dobberke Riehle, 2009
Executive Director, Centro Legal
Milwaukee, WI



"As a professional in the field of international education, I use the intercultural communication abilities and strong research and writing skills that I developed as a German major on a daily basis."

Calla Buttke, 2016
Director of College Counseling, Pathlvy
San Francisco, CA

Career Communities for German Majors

SuccessWorks has eight Career Communities to connect you with career advising, resources and programs. Here are a few suggestions on where German majors can start.

- Non-Profit & Education
- Consulting, Finance & Other Business Roles
- Government, Policy, International Affairs & Law
- Technology, Data & Analytics

Not inspired by these options? Visit SuccessWorks to explore more widely.

successworks.wisc.edu